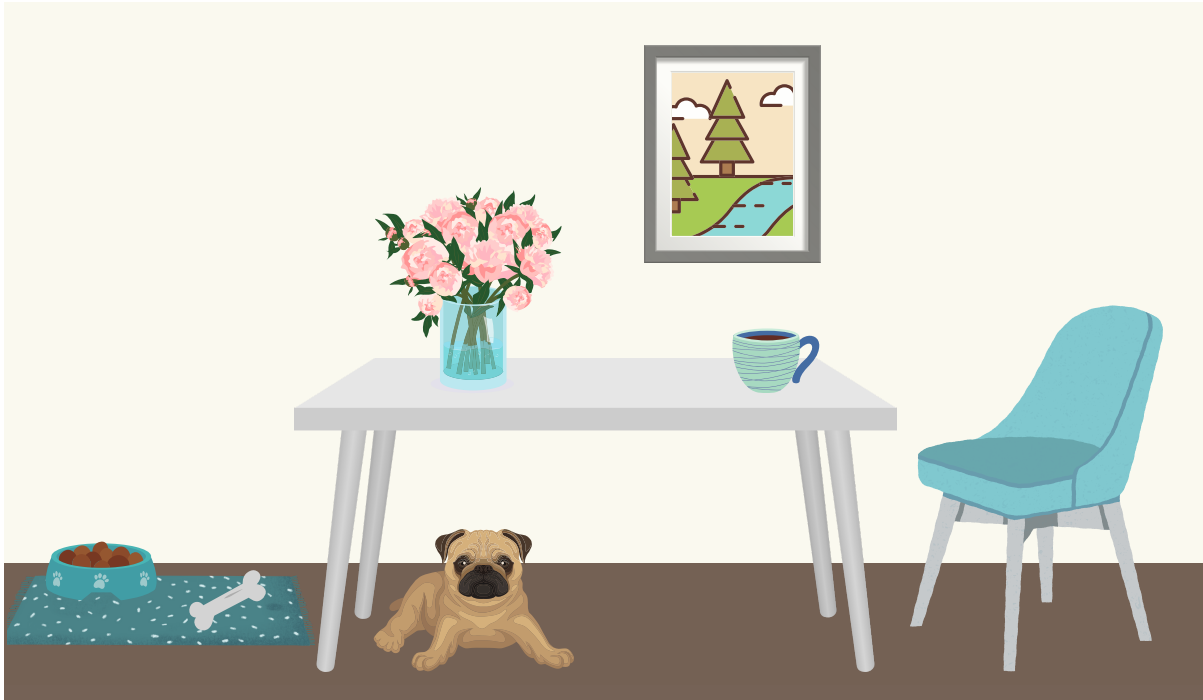


Taandee Anima?

Where is it?



La bol diseu la taeb ashteew.

The cup is on the table.

Li shyaen̄ disoor la taeb ayaaw.

The dog is under the table.

La sheez akotii la taeb ashteew.

The chair is beside the table.

Li portree aañleer la taeb ashteew.

The picture is above the table.

La taeb aañbaa li portree ashteew.

The table is below the picture.

Lii fleur didaañ li pot di fleur ashteewa.

The flowers are inside the vase.

La bol di shyaen̄ araa li zoo ashteew.

The dog bowl is near the bone.

Li zoo aañter li shyaen̄ pi la bol di shyaen̄ ashteew.

The bone is between the dog and the dog bowl.